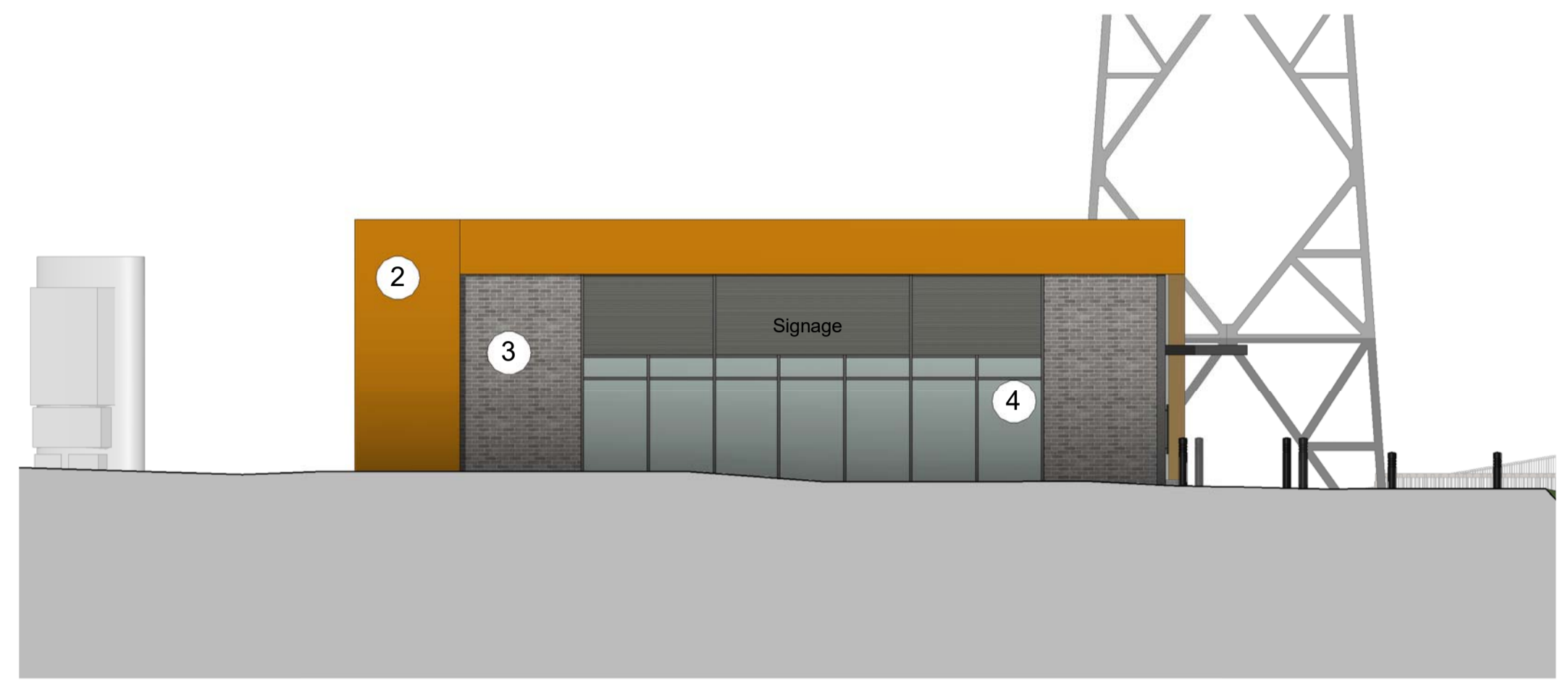


Construction staff and operatives must ensure the principle contractor has provided thorough and accurate information on all health and safety aspects relating to the designs identified on this drawing include the review of:

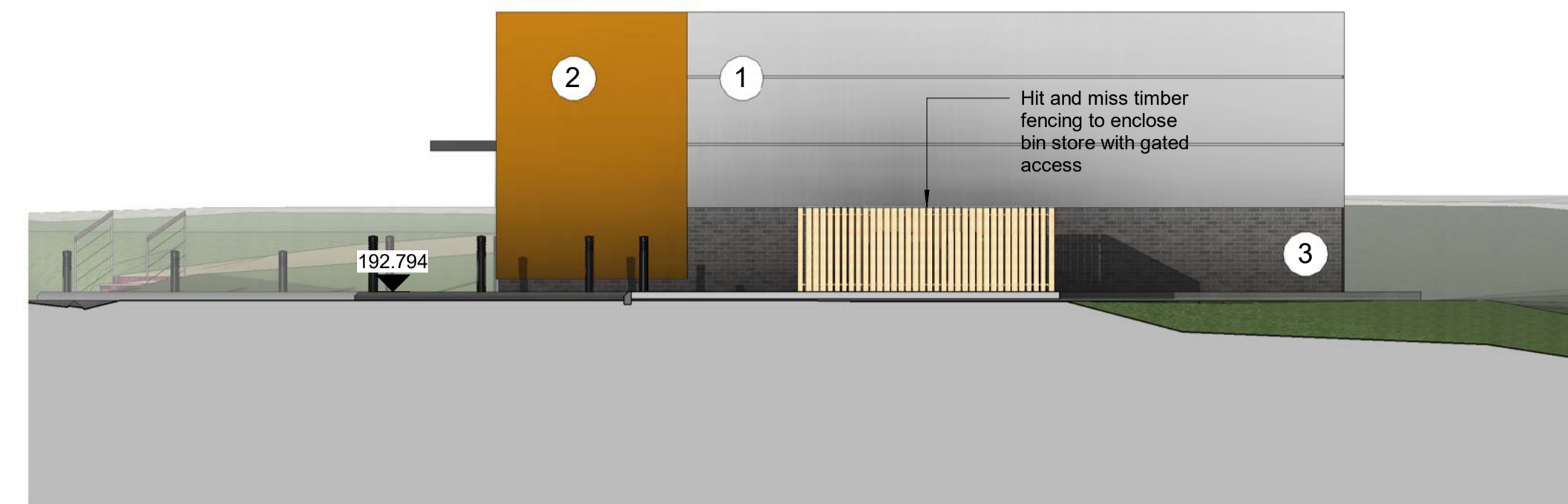
- Designers/contractors risk assessments
- Method statement
- Permit to work
- Pre construction information

The designers note that the following health and safety risk relating to this drawing have not been eliminated during the design process:

ref	residual risk



Units 7-10 West Elevation
1 : 100



Units 7-10 East Elevation
1 : 100



Units 7-10 South Elevation
1 : 100

Material Key

1. Kingspan Composite Panel - Gull Grey
2. Kingspan Composite Panel - Metallic Copper
3. Blue/Grey Brick
4. Curtain Walling
5. Aluminium trim - Merlin Grey

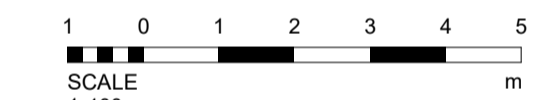
Standard Details:

Unit 1

6. Wall through colour render White RAL 9100
7. Plinth through colour render Grey RAL 7038
7. Insulated metal panel RAL 9006

Unit 11

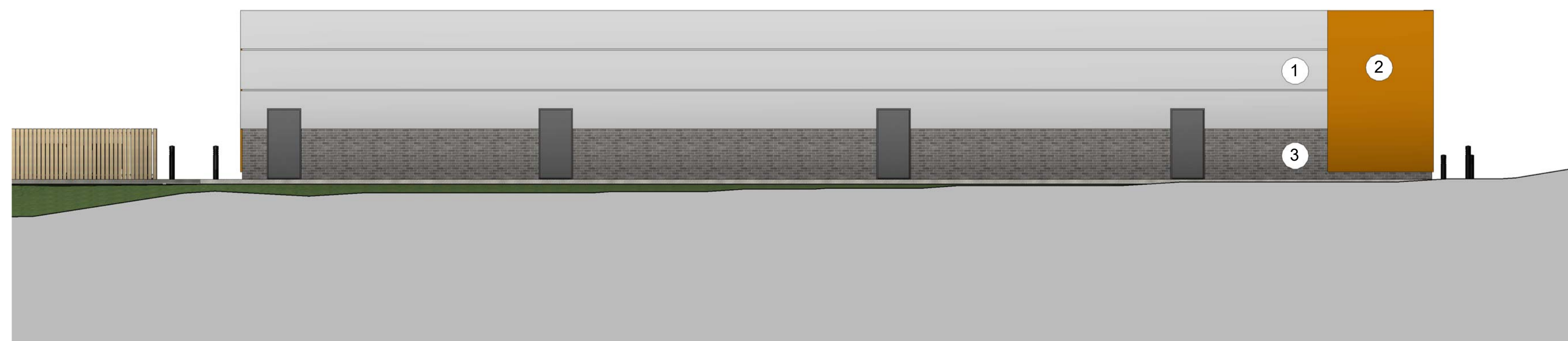
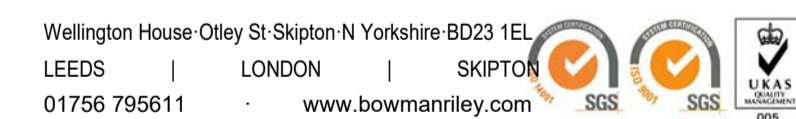
9. Through colour render White RAL 9010
10. British Western Red Cedar laid horizontally
11. 2mm thick aluminium backed panels, powder coated to Pantone 202C



revision	date	by	chk
B	21/12/17	WG	AW
A	05.12.17	BS	AW

All dimensions to be verified on site, and the Architect informed of any discrepancy. All drawings and specifications should be read in conjunction with the Health and Safety Plan; all conflicts should be reported to the CDM Co-ordinator. This drawing is the copyright of Bowman Riley Architects Limited. © DO NOT SCALE THIS DRAWING

- preliminary
- planning
- comment
- tender
- construction
- record



Units 7-10 North Elevation
1 : 100

MAPLE GROVE DEVELOPMENTS
PART OF THE EBC WEGGERT GROUP

drawn by	checked by	date	scale @ A1
WG	AW	11/23/17	1 : 100

Hattersley, District Centre Hattersley

Proposed Elevations Unit 7-10

project number	drawing number	revision
7735	012	B